

Sloppy Darts Mounting Instructions

Remove the two screws at the center of the backboard



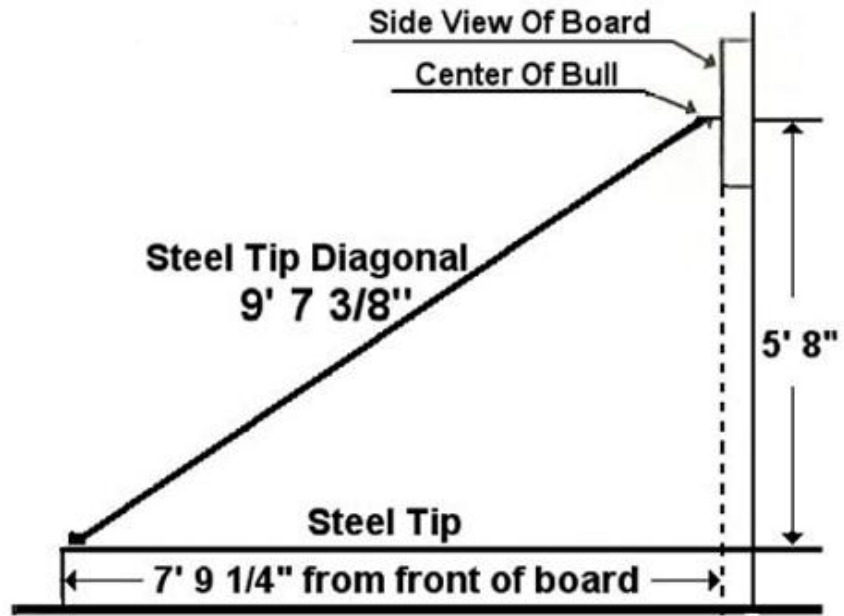
Mount the dart board hanging clip to the preinstalled screws.



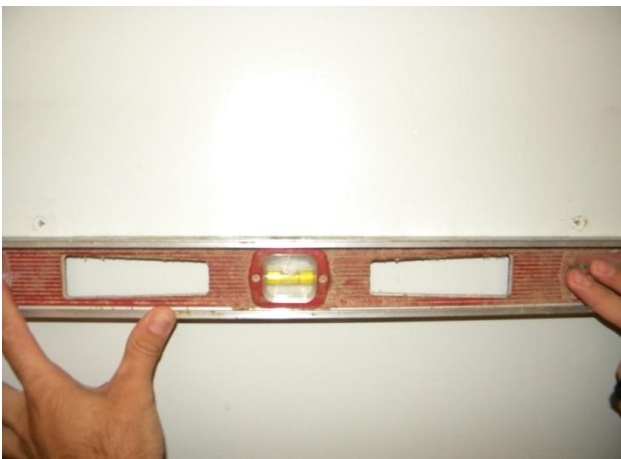
Please note: the hanging clip came with your prepurchased bristle dart board.
Hanging clip not included with SloppyDarts Backboard.
Hanging clip maybe purchased from Sloppydarts website.

Continue to the next page for backboard mounting

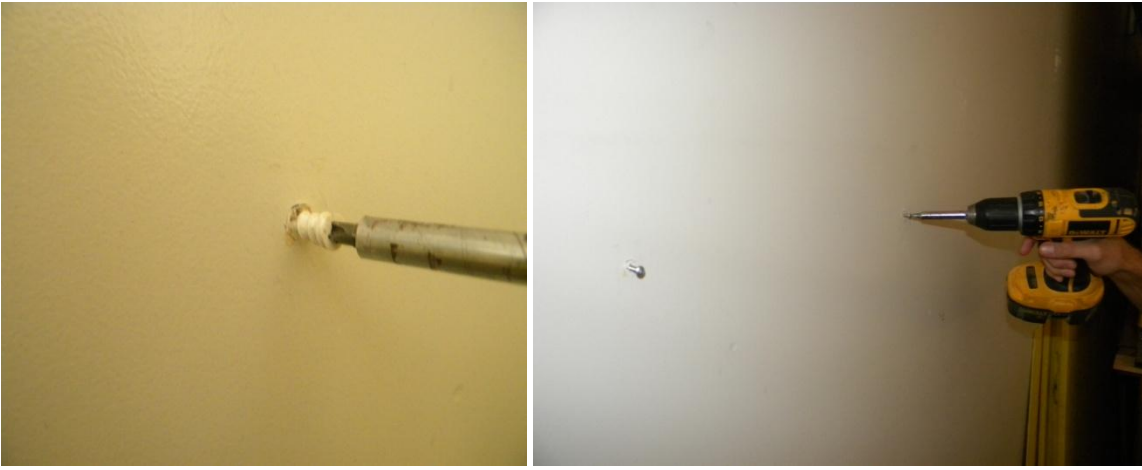
Sloppy Darts Dart Board Backboard Mounting Instruction



1. First Mark Two Points. 16" inches apart.



2. Ensure your two points are level.

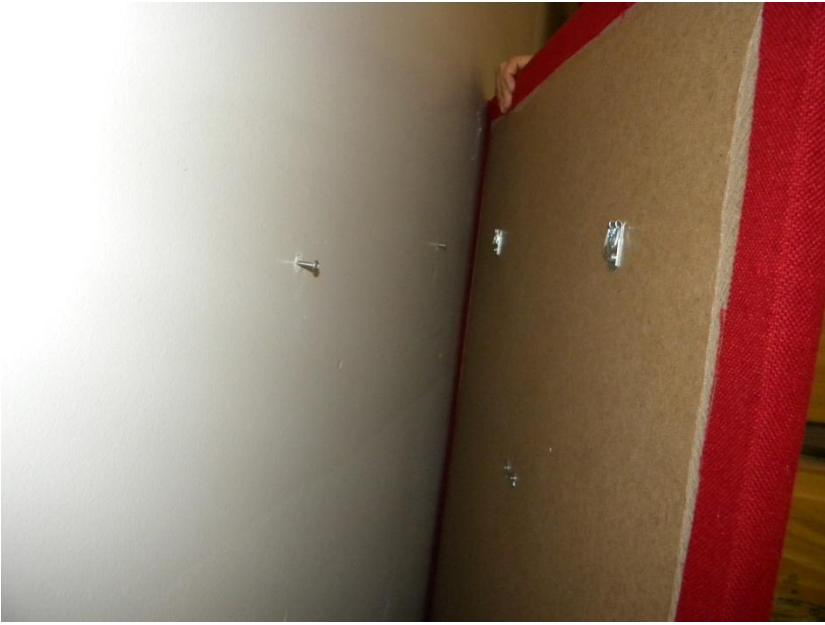


3. Drill the two included drywall anchors on the two points marked in step 1.
4. Screw the two included screws into the wall anchors



5. Prepare to mount the backboard

Continue to Step 6.



6. Hang the back of the board using the two pre-mounted hooks onto the wall mounted screws.